

2011 Purple Regiment Uniform Guidelines

Please read & keep this guide. There is much new information, so even if you're a senior member, please do review it all. If you have a concern that isn't covered here, please contact me. Our uniforms are over 8 years old and have seen a lot of great shows come and go. Unfortunately due to the current economy & budget constraints, they are going to have to last a while longer. Please take the best care of your uniform possible, and wear it with Regiment Pride!

Kim Allman

kimallman@comporium.net

803.322.7163 (cell)

Summer Uniform

Each student will receive 2 show tee shirts this year. You will get these the last day of camp, and they will be worn at the exhibition that evening. You will wear your own khaki shorts (must meet school dress code) at the band camp exhibition and the South Pointe away game.

You will order & purchase the following once school begins: Marching shoes, gloves*, & black socks**.

(*Percussionists do not wear gloves. All other students should order at least 2 pair of gloves. They come in several styles; ask your section leader for recommendations if you are unsure about your grip choices. The company rep will size your hand for proper fit.)

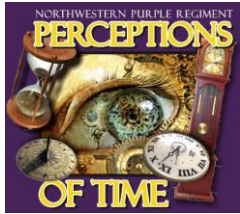
**Black socks can be purchased anywhere, but they must be at least crew length – no “anklets” – and they must be SOLID BLACK... no designs at all.)

Uniform Hemming: If time allows, please get your pants hemmed AFTER your shoes come in so you can measure hem accurately. Use the photos below for reference.



Correct band pants hemming (top photo)... there should be no “break” in the crease. Try to wear your band shoes when you are getting your hem measured to assure proper length. This is shorter than suit pants or jeans are usually worn; but the top of the shoe should still be just covered. A crease “break” (lower photo) is not desired for band; it does not give a sharp look when marching, and you are more likely to walk on the hems, getting them dirty, possibly wearing holes and increasing your odds of missteps.

When your pants are hemmed, **be sure that no fabric is cut off** the length. Someone much taller than you may need to wear that uniform next year; and once the legs are cut short; they can never be made longer. A very deep hem is perfectly fine, and the inseam may be opened if needed for the hem to lie flat without puckering the leg. Jacket sleeves should be similarly hemmed if needed, with no fabric cut off.



2011 Purple Regiment Uniform Guidelines

Wearing the Uniform

The full marching uniform includes:

Black Helmet with Plume

Black Bibber Pants – zip-front with adjustable shoulder straps

Purple & White Uniform Coat

Detachable Gold Metallic Sash (Baldric)

White & Gold Gauntlets (wrist cuffs)

White Gloves

Show Tee Shirt

Black Uniform Socks

Black Uniform Marching Shoes with black laces – polished, no scuff marks

Uniform Variations:

Percussion section (Pit and Drum Line) do not wear gloves or gauntlets. Pit and Tubas

also do not wear the helmet. Drum majors wear black jackets and black gauntlets.

Flute players are allowed to cut the fingertips off their gloves.

WHEN YOU ARE WEARING YOUR BIBS, the straps must be on your shoulders and the zipper up! No hanging straps!

Acceptable “tops” to wear under the uniform:

Show tee is ALWAYS worn under the bibs. Any added layers go UNDER the show tee.

Thermal tops, UnderArmor or similar, but no turtleneck or mock turtles that would show at neck

Long sleeve white tee shirt

Unacceptable “tops”:

Anything not listed above.

Anything that shows through the jacket fabric or at collar or cuffs.

(Saxphones’ show shirts might peep out a little at the neck due to the instrument strap.)

Acceptable “bottoms” to wear under your bibbers:

Soccer / basketball / bike shorts in warm weather

UnderArmor, thermals, long-johns, etc. in colder weather

Yoga pants, snug sweatpants, etc.

Leggings & sophies for ladies

Unacceptable “bottoms”:

Jeans or any other denim

Cargo shorts or pants

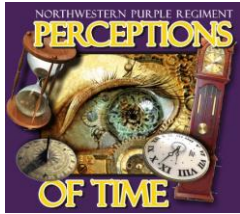
Any clothes that cause lumps, bumps, or bulges

Any clothes with brads, sequins, studs, zippers, chains, etc. that can cause fabric damage

Anything that shows



Dressing rooms are available at all competitions. If you wish to wear clothes on the bus ride that are not acceptable for uniform wear, you must change in the dressing rooms, not in the busses or parking lots.



2011 Purple Regiment Uniform Guidelines

HAIR, JEWELRY & ACCESSORIES

Long hair should be pulled up &/or back. High ponytails probably would not be too comfortable under the helmet. "Spirit" ribbons are acceptable in school colors.

Makeup should be fairly subdued (some glitter is ok.) You should not wear makeup such that a field judge could pick you out individually...this is a judgment call and left to the discretion of band staff.

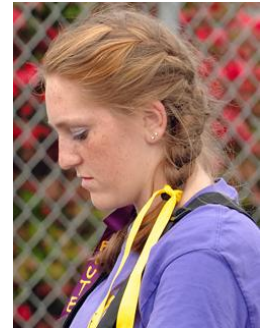
The only jewelry allowed is small stud earrings, no hoops or dangles.

No watches, wristbands or bracelets.

Necklaces must go under clothing and cannot be seen in uniform. No sunglasses, hats, hoodies, etc. on the field.

Nothing in your pockets should be seen or heard... no jangling keys, wallet chains, etc.

AND it should go without saying: Absolutely no cell phones, iPods, ear buds, cameras, etc.



Carrying, Caring For & Cleaning the Uniform



At exhibitions and competitions, when you are instructed to get in "Two Lines" for warm-ups, you should be wearing your shoes, socks, bibs, and show shirt.

You should fold your coat as shown in this photo, and carry it, your gauntlets, gloves, and plumed helmet stacked on your left forearm, palm up, & helmet facing forward. Hold the front of the helmet with your left hand for balance, and carry your instrument in your right hand. (Percussion & Tuba rookies, check with your section leaders about your variations.)

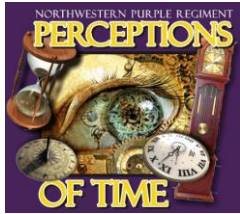
During football game 3rd quarter band break, you will fold your jacket, & stack it with gauntlets & helmet at your seat in the stands.

IMPORTANT NOTE ABOUT HELMETS:

Never pick up or carry your helmet by the plume! This causes the feathers to get crushed &/or fall out. Plumes are \$25+ each to replace due to "balding" spots or broken wires. Uniform volunteers will attach and detach your plumes as needed. **Do not remove your plume at any time unless instructed to do so by Mr. Wells or Mr. Yost.**

Uniform Emergencies

Spot cleaning for accidental spills, mud or grass stains, etc. should be handled immediately. If you get something on your uniform at a game or competition, see a uniform volunteer right away. We keep supplies for dealing with such emergencies as lost buttons, stubborn zippers, broken shoelaces, etc. We carry safety pins, needle & thread, hairbands, etc. **If you have a problem or need something, let us know!** If you forget something, we do keep some spare gloves &



2011 Purple Regiment Uniform Guidelines

socks on the truck. They are available for PURCHASE at \$2 each. However, anyone who does not have their full uniform at inspection will be reported to Mr. Wells at his request, so please keep up with your own requirements.

*****NEW THIS YEAR*****

Uniform Storage:

Uniforms will be stored at school during the week and brought to games and competitions on the equipment truck. Rolling racks similar to this (photo) are being constructed to hold uniform bags and helmet cases by section. You will no longer take your uniform home unless you check it out for additional dry-cleaning.



After wearing, fold your bibs with neat creases & hang them & your coat inside your uniform bag. Return your bag to your section's rack and hang it up **IN NUMERICAL ORDER**. Stack your helmet box on top of the rack. Gauntlets will go in a labeled zip-lock bag provided for you and the bag will be hung from the hanger clips at the front of the rack. You may keep your gloves in either your helmet case or in a zip-lock bag in the pocket of your uniform bag as you wish.

Helmets are stored UPSIDE DOWN in the helmet case. Leave the foam insert in the bottom of the case. Cases can be tricky to shut, it works best if the pointed ends of the helmet brim are diagonal in the box... don't force the lid closed and be careful not to pinch the brim in the lid – this wears off the gold trim. Just give it a little wiggle and the helmet should settle enough allow you to shut the clasp. This does get easier with practice! 😊

You will keep your shoes with you. Optional shoe bags are available for purchase in the uniform room.

Cleaning:

Your uniform jacket & bibbers will be professionally dry-cleaned 3 times during the season. The cleaner will pick up all the uniforms from the school on designated Mondays and have them returned by Thursday. Dry-cleaning is \$7 each time (the best deal available) and can be taken out of BCP's if you have an available balance. If you wish to have your uniform cleaned more often, you may, of course, but you must check the uniform out with the uniform volunteers on-site, and have it returned to school by the following Thursday (by Wednesday if we have a Thursday night game.)

You will be informed in advance when there is a cleaning week scheduled. This is a good time to take your other uniform parts home to also clean your gloves, gauntlets, sash, and shoes.

GAUNTLETS AND SASHES MUST BE CLEANED BY HAND. THEY CANNOT BE DRY-CLEANED!!

Dry-cleaning chemicals cause damage to the gold trim. Just wipe your sash with a clean damp cloth and a small drop of mild detergent. Gauntlets are cleaned by soaking them briefly (3-5 min) in a mild solution (a drop or two of Dawn with a spoonful of OxyClean powder in a sink of warm water.) Dab any stains with a clean white cloth. Do not scrub or use a brush; it will damage the fabric. Rinse under cool running water, roll in a clean pale colored or white towel to remove most of the moisture, and stand them up to dry. Gauntlets can take 24-36 hours to dry, so please don't start this process on a Thursday night. 😊 Gloves can be machine washed on gentle & hung to dry. A laundry zipper bag works well for gloves. Do not use bleach as this causes yellowing. OxyClean or Dawn will remove most stains from gloves.